



Air Messenger PIN Redirector

Paging Gateway Router

By

Internet Software Solutions

Take control of your distribution lists and keep your destination PINs Secure

The Air Messenger PIN Redirector is a complete solution to allow you to accept incoming TAP, SNPP, and E-Mail pages and route them to one or more carriers via TAP, SNPP, or E-Mail by using a Windows 9x/NT/2000 Workstation or Server.

You can use this gateway as a protocol converter for older dispatching systems that will only allow TAP or for content distribution such as in a Fire Notification Network.

Significantly increase your alpha traffic and cut costs on costly toll-free lines by using the Internet. This allows you to receive pages from any SNPP or SMTP compatible Client over the Internet rather than using TAP.

Keep in control of your distribution lists and your destination PINs. By creating accounts you have control who is allowed to access your system and where these pages will be delivered to. You will no longer need to reveal your final destination PINs which maintains security.

SYSTEM FEATURES

- Runs on Win 95/98/NT/2000 Workstation or Server
- Multiple carrier support
- Dial-Up Lines are pooled when accessing multiple carriers
- Built In SMTP Server or receive pages via Domain POP or Exchange account
- Password protection
- Delivery Failure Notifications
- Account Tag Lines (Keeps Track Who Sent The Page)
- Multiple Destinations From a Single PIN
- Create Destination Group Lists For Easier Maintenance
- Send Pages Directly From Server

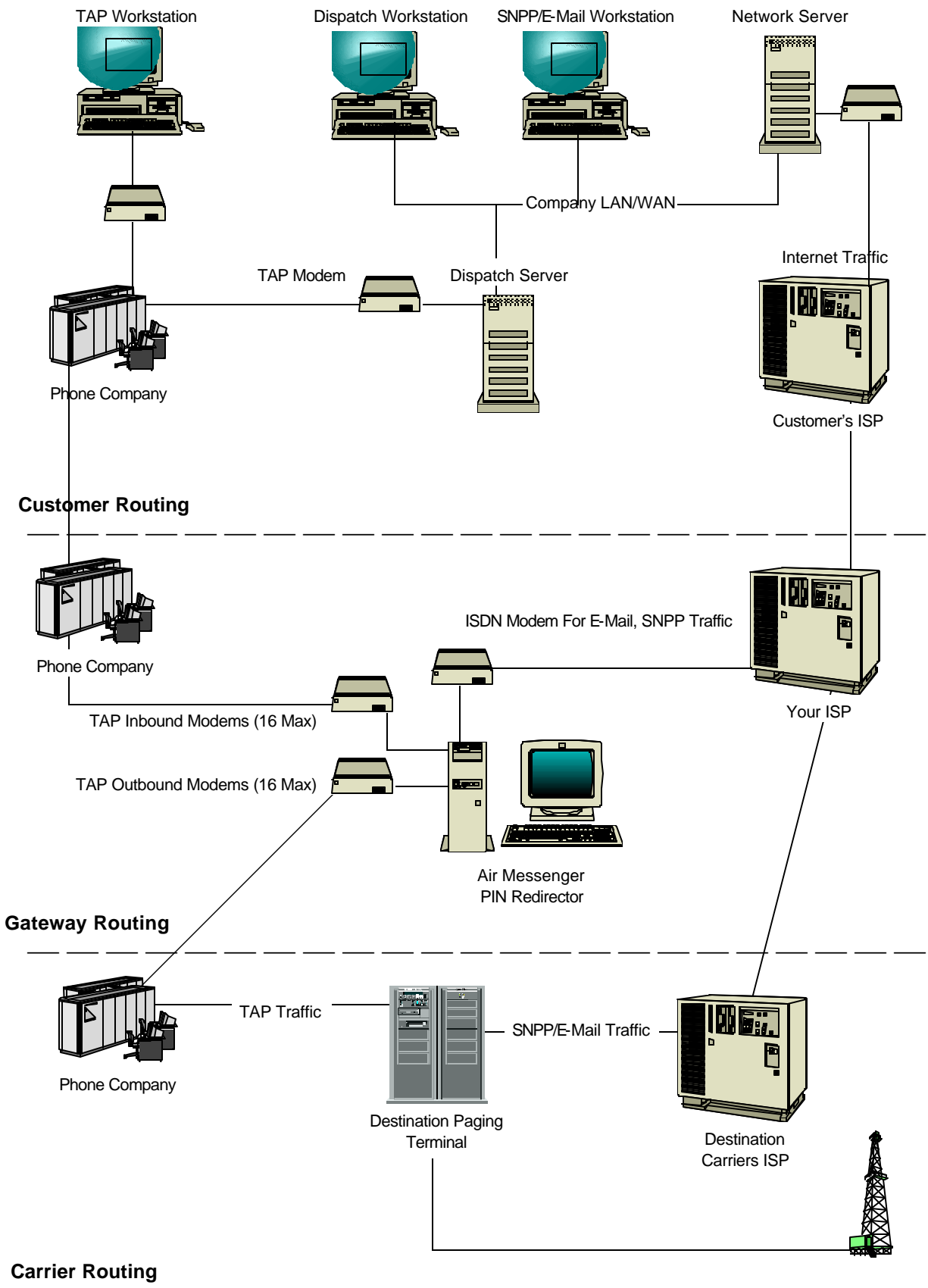
Receive Pages

- SMTP electronic mail
- SNPP Simple Network Paging Protocol
- Up To 16 TAP Dial-Up Modem Line

Send Pages

- SMTP electronic mail
- SNPP Simple Network Paging Protocol
- Up To 16 TAP Dial-Up Modem Line

Typical Operation



Related Software Products

Below are products that we offer to give you the ability to use the Air Messenger Gateway Server to its full potential.

Air Messenger Pro

Air Messenger Pro give you the ability to send alphanumeric pages to any Cellular Phone or Pagers from any WinXX/NT/2000 computer. This is our top of the line paging client. Some of the features you can find in this software package is the ability to create group list on the fly, shared group and user lists, save commonly sent messages, queue or schedule messages for delayed delivery. Air Messenger Pro is compatible with all TAP compliant paging systems and also includes the SNPP protocol for Internet Paging and E-TAP for enhanced TAP paging features.

Air Messenger Lite

Air Messenger Lite is a lightened down version of our Pro for people who just want a simple Alphanumeric Paging client. Air Messenger Lite will give you the ability to send alphanumeric pages to any Cellular Phone or Pager from any WinXX/NT/2000 computer. Compatible with all TAP compliant paging systems. Includes E-TAP for enhanced TAP paging features.

Air Messenger SNPP

Air Messenger SNPP is a lightened down SNPP only version of our Air Messenger Pro for people who just want a simple Alphanumeric Paging program that functions with a SNPP Gateway. Air Messenger SNPP will give you the ability to send alphanumeric pages to any Cellular Phone or Pager from any WinXX/NT/2000 computer over the Internet.

Specifications/Requirements

General

AMPR is available as turn key system or as software only.

Turn Key Systems

- Rack Mnt. 128mg Ram 466/60 Server
- 15" Rack Mnt. Monitor & Keyboard
- Windows 2000 Professional
- PC Anywhere For Remote Diagnostics
- 10/100 PCI Network Card
- 1.44 Floppy & 40x CD-Rom Drive
- 15 Gig Hard Drive
- 2,4,8, or 32 Multi-Port Serial Card (OP)
- 16 or 32 Port Modem Bank (OP)
- 12,4,8 or 32 Modem Cards (OP)
- Rack Enclosure

Minimum System Requirements

- Windows 9x/NT/2000
- 64 Meg Ram 9x ,128 Meg NT/2000
- 2 Gig Hard Drive
- VGA Monitor
- Internet Connection
- Modems if TAP Is Required
- Serial Port If TNPP Is Required
- Parallel Port
- CD-ROM Drive

Capacity

Max# Accounts: Unlimited/Licensed
Max# Providers: Unlimited
Max# Destinations: Unlimited

TAP Ports

Max# Inbound 16
Max# Outbound 16

TNPP Ports

Max# Ports 1
Max# Destinations Unlimited

E-Mail Paging

Outbound SMTP/Exchange
Inbound Internal/POP3/
Exchange

Note: Outbound SMTP Requires A SMTP Server

SNPP Server

Of Connections Hardware Dependent
Commands Supported 2-Way
Hold
NoQueue
Help
Page
Mess
Data
Rese
Msta

Note: *Hardware configurations may cause limitations!*